

# Classics Collection

## Group 15: Kakuro (*Hausigel*)

This is the fifteenth set in our puzzle series „Classics Collection“. Have fun!

**Puzzle instructions:** Enter a number from 1 to 9 into each white cell. The numbers in grey cells indicate the sums of the numbers in the horizontally or vertically adjacent „words“. Within each word, no number can appear more than once.

Note that some cells are circled. The circles can be ignored for the purpose of solving the puzzles, they are just relevant for the solution code.

**Example and Solution:**

	4	23		28	9
10	○		17		
3		○	9		
	7		○		
	10				14
34				○	
12			8		○

	4	23		28	9
10	○3	7	17	9	8
3	1	○2	9	8	1
	7	1	○4	2	
	10		12		14
34	7	4	8	○6	9
12	3	9	8	3	○5

**Solution code:** Enter the contents of the circled cells (from the top left to the bottom right).

In the example, the solution code would be: **32465**

**Note regarding syntax:** For this group, the *PuzzleCheck* tool will ignore all characters except digits, hence spaces and separators (such as commas) can be entered at will.

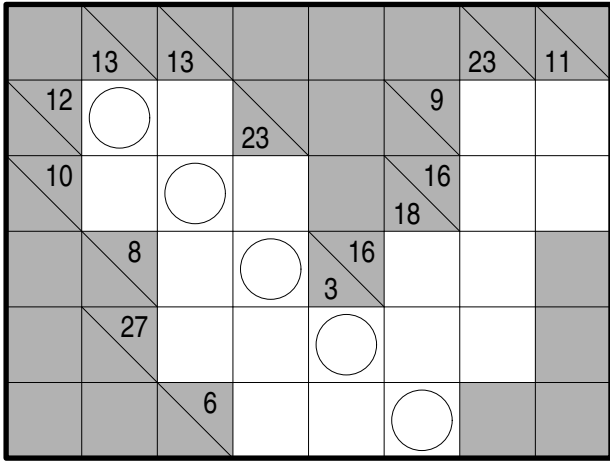
**Kakuro 1**

		15	17		
	9				
	18			27	
24	○				3
14		○	4		
			5		
24			○		
	10			○	

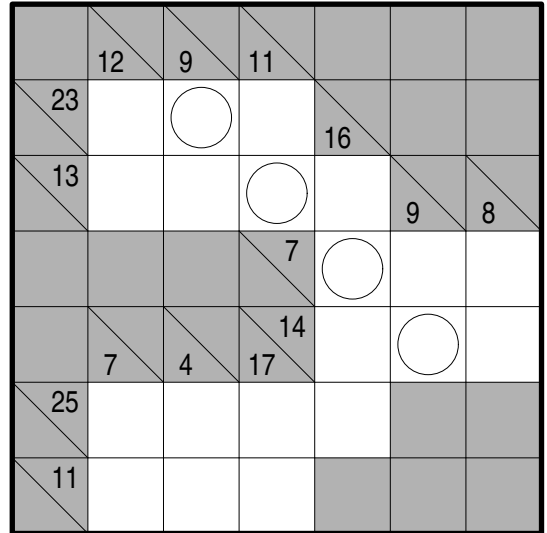
**Kakuro 2**

	9	20	11		
6	○				
				21	
26		○			7
		14		○	
			18		○
			4		○

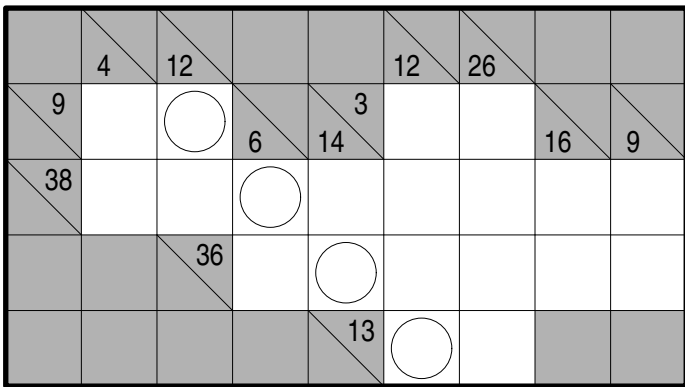
### Kakuro 3



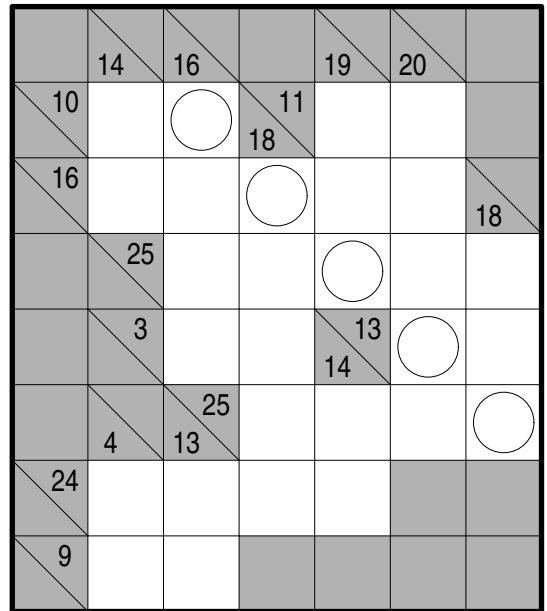
### Kakuro 4



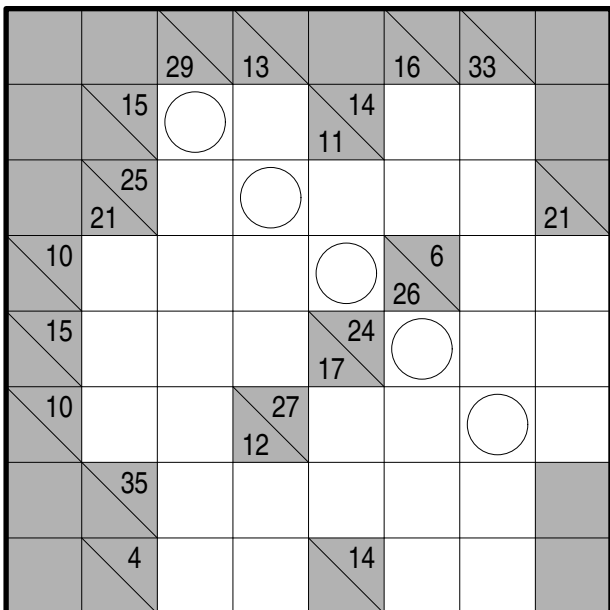
### Kakuro 5



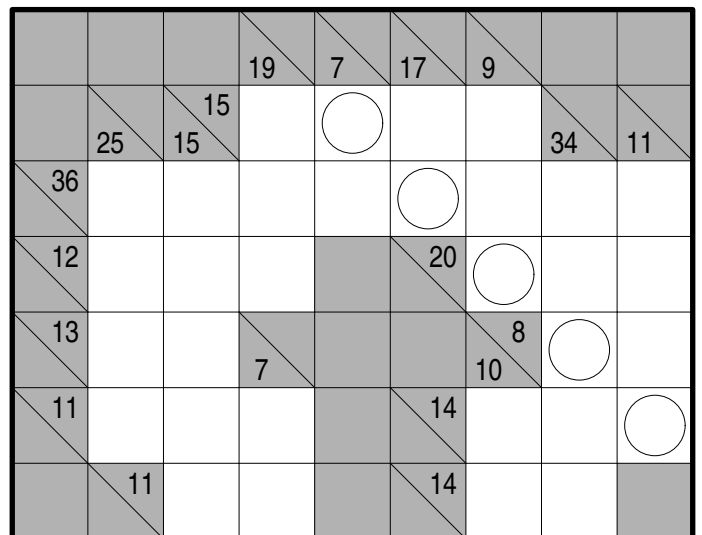
### Kakuro 6



### Kakuro 7



### Kakuro 8



### Kakuro 9

	12	20				16	7
9	○				12		
17		○		18	25		
	12		○			13	
	3			6			
	15	9	25		○		12
21					6	○	
7					15		○

### Kakuro 10

			26	12	13		
	5	8					8
34	○						
20		○			4		
	3		○		27		
	8			○		7	9
		26			○		
		7	17	9			○
26			10				
20							

### Kakuro 11

	14	6				33	10	
7	○				4			6
18		○		34	24			
	29		○					
		29			21			
	7						17	
32	15			6				13
25					19		○	
10						5		○

### Kakuro 12

			13	36	43	5		
		11						22
	27							
	36							26
9	28			3			11	
		○		15			4	
37		○						
42			○					
5				16	○		14	
		31		7			3	
						○		
		14					○	