

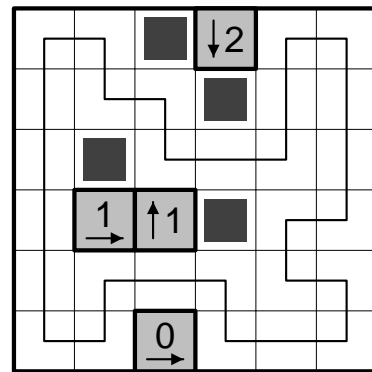
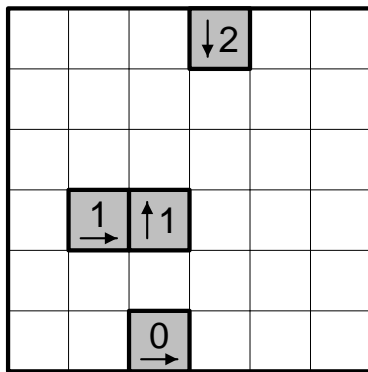
# Classics Collection

## Group 19: Yajilin (*Hausigel*)

Yajilin is a less intuitive puzzle type than most others we have seen in this series, and it may appear less accessible; still, it has a rich potential and deserves its place in the Classics Collection. As usual, the set consists of 12 puzzles in two different sizes. The last few ones are a bit more challenging for a beginners series, but we hope you enjoy the puzzles anyway. Have fun!

**Puzzle instructions:** Place some blocks in the grid, and draw a closed loop that runs horizontally and vertically and passes through each cell the except the clue cells and the blocks exactly once. Clue cells cannot contain blocks, and cells with blocks cannot be horizontally or vertically adjacent (they can touch each other diagonally). The numbers indicate how many blocks appear in the specified direction.

**Example and Solution:**

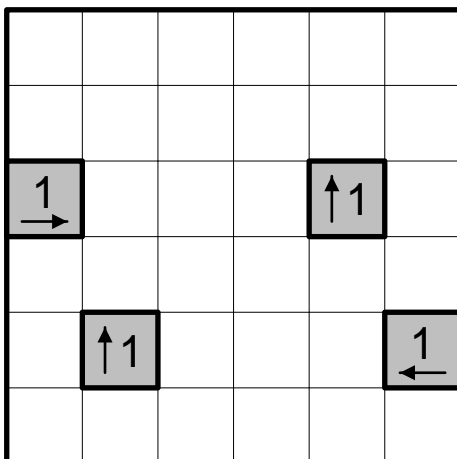


**Solution code:** For each row from top to bottom, enter the column number where the first block appears, i.e. 1 if there is a block in the leftmost column, 2 if there is a block in the second column, etc. Enter 0 if the respective row contains no block at all.

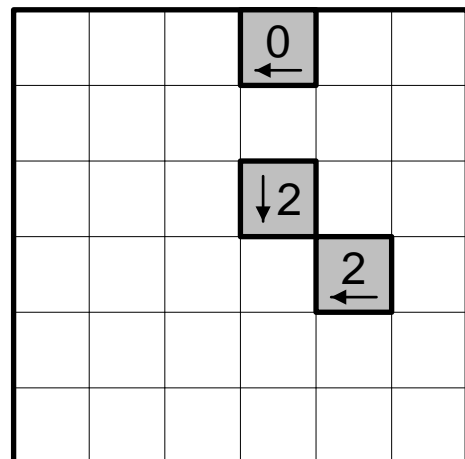
In the example, the solution code would be: **342400**

**Note regarding syntax:** For this group, the *PuzzleCheck* tool will ignore all characters except digits, hence spaces and separators (such as commas) can be entered at will.

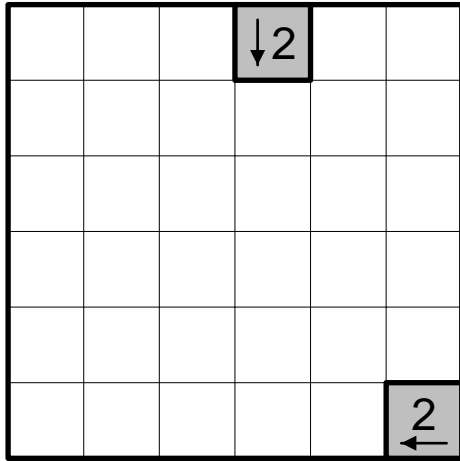
Yajilin 1



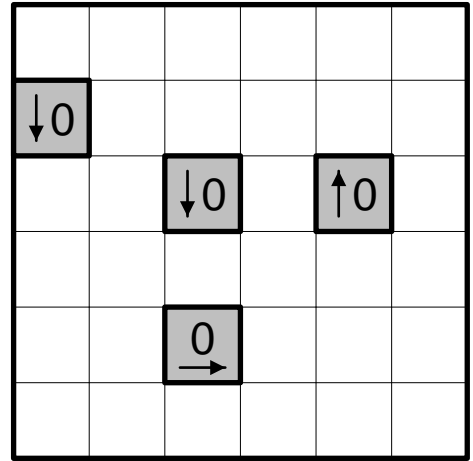
Yajilin 2



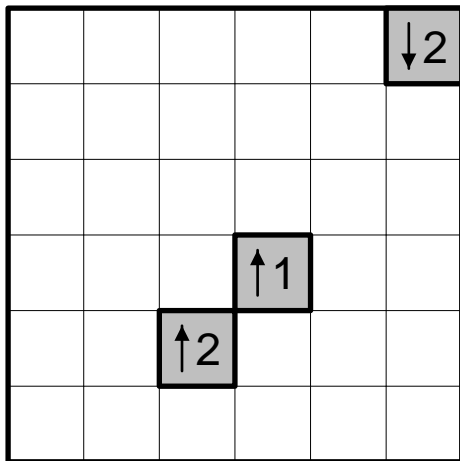
Yajilin 3



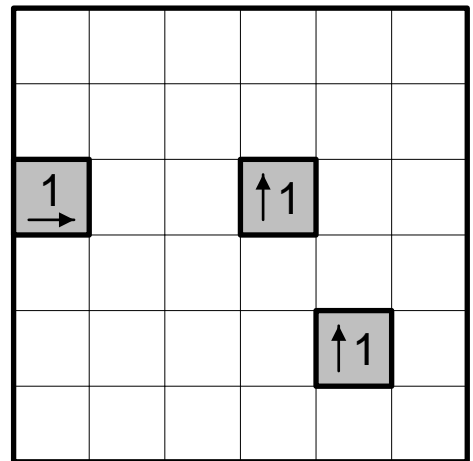
Yajilin 4



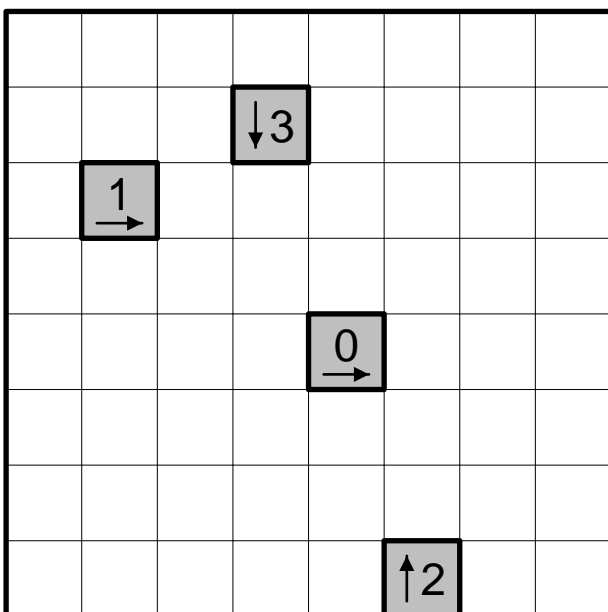
Yajilin 5



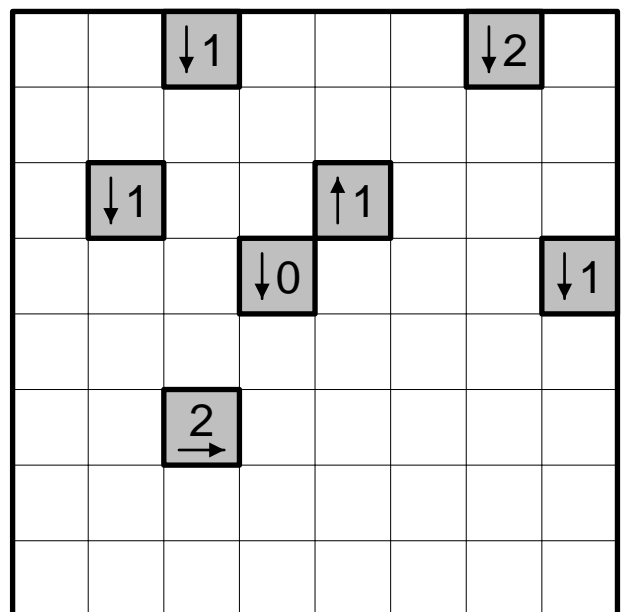
Yajilin 6



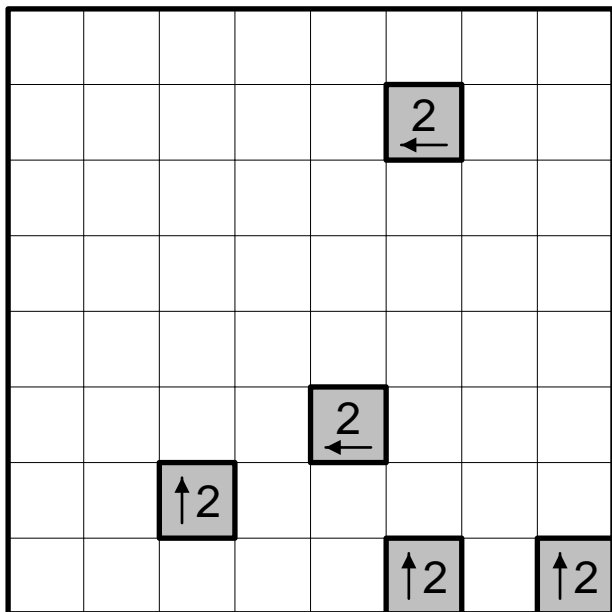
Yajilin 7



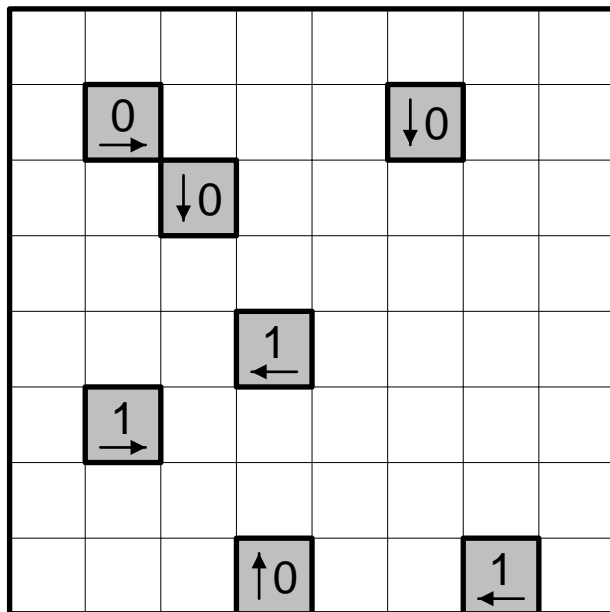
Yajilin 8



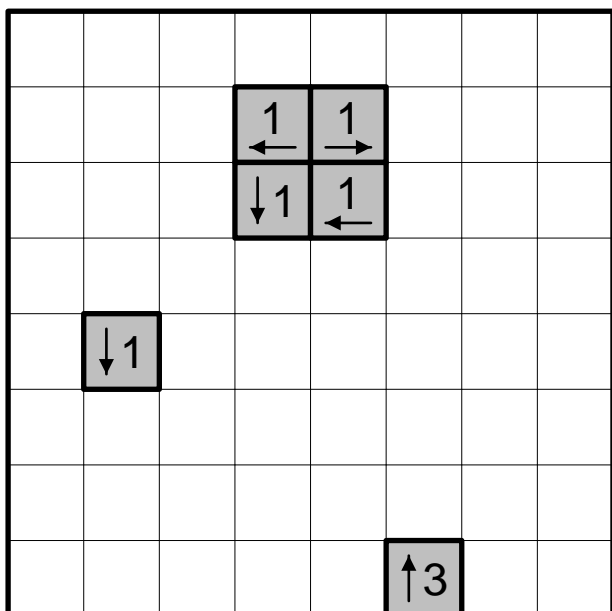
Yajilin 9



Yajilin 10



Yajilin 11



Yajilin 12

